



# **WETBACK**

---

**CONTRACTS E&I (PTY) LTD**



# **Wetback Contracts E & I (Pty) Ltd**

Material & equipment supply, field installation, testing, commissioning and maintenance services in electrical and instrumentation construction industry

**Partnering with**

## **Wetback Contracts (Pty) Ltd**

Fabrication, installation of piping systems, shutdown and maintenance services, structural steel, platework, pressure vessels, fired heaters and other mechanical equipment



Our **Vision** is to be the leader in the industry in which we operate and a valued partner to all our stakeholders.

Our **Mission** is to systematically expand our business both locally and internationally by continuously investing our resources and capabilities in building our reputation as a dynamic, reputable company that practices high ethical and moral values in all its business operations whilst setting the trend with quality services, on-time project execution and exceptional safety performance in both national and international construction industry sectors.

# Why Partner with Wetback?

## **Wetback Contracts E & I (Pty) Ltd**

- **Qualifying Small Enterprise**
- **We are Entrepreneurs offering a combined 43 years of local and international experience in the E&I Construction Industry**
- **Add operational value to Wetback Contracts (Pty) Ltd**
- **Innovative ideas and fresh perspective**

## **Wetback Contracts (Pty) Ltd**

- **Vision and mission to expand our business**
- **48 years in the construction industry**
- **Good governance and solid infrastructure**
- **Excellent reputation for quality, safety and on time delivery**
- **ISO Certified Integrated Management System**
- **Highly competent resources**
- **Commitment to enterprise development**



## Shareholding Structure and B-BBEE Status

Wetback Contracts (Pty) Ltd  
51% shareholding

Sihlangene Holdings (Pty) Ltd  
49% shareholding

Executive Directors:

Wonder Tshwane (CEO)  
Chris Sibiya (COO)  
Gianni D. Anić  
Pedro Dias

- 61,8% Black Owned
- B-BBEE Level 2 (QSE)



# The Benefits of the Partnership to our Customers

**Diversification of services**

**One-stop-shop (MEIP)**

**Improved project coordination**

**Increased expertise and capabilities**

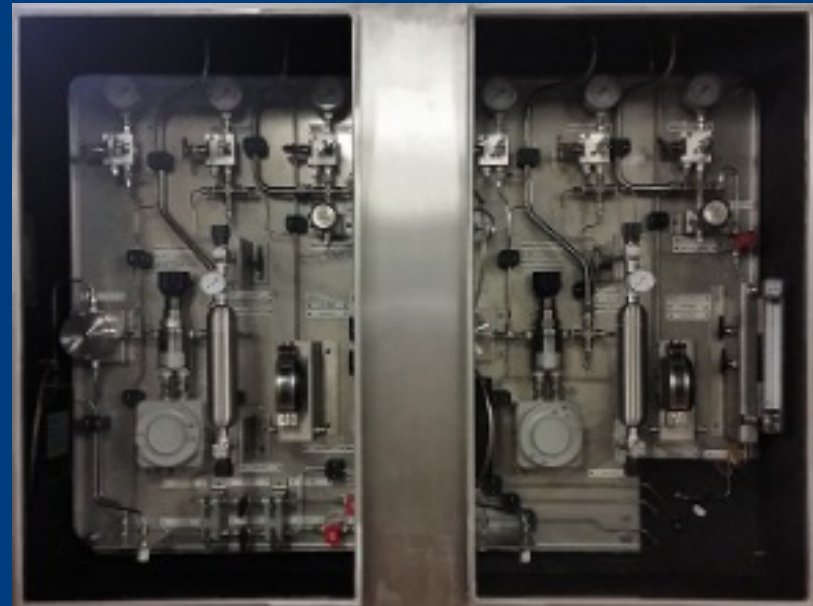
**Increased efficiency and productivity**

**Enhanced safety and quality**

**Improved customer satisfaction**

## WE SUPPLY

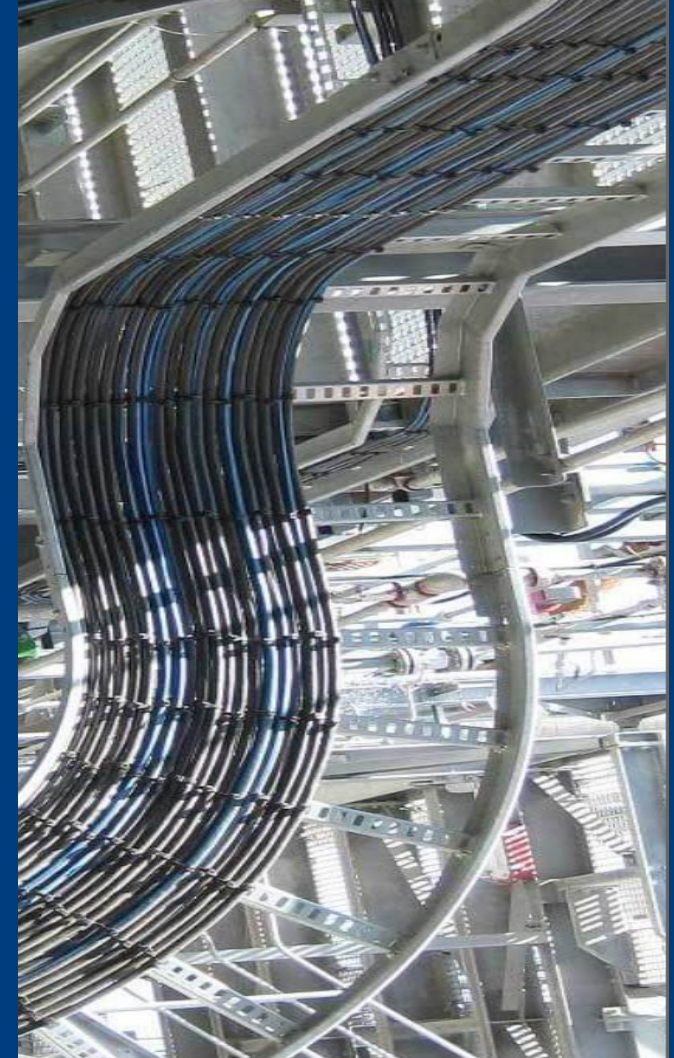
- Electrical & Instrument Cables
- Distribution Boards
- Local Control Panels, Enclosures & Junction Boxes
- Instruments & Stands
- Instrument Tubing & Fittings
- Light Fittings, Poles, Socket Outlets & Switches
- Cable Racks, Trays & Supports
- Conduits & Accessories
- Earth & Lightning Protection
- Accessories (Bars, Rods, Pots, Finials, etc)





## WE INSTALL

- Electrical & Instrument Cables including Terminations
- System Panels (DCS & ESD)
- Distribution Boards (MCC's DB's & Switchgear)
- Local Control Panels, Enclosures & Junction Boxes
- Instruments & Stands
- Tubing of Instruments, Analyser & Steam Tracing
- Fire & Gas Installation
- Cable Racks, Trays, Supports & Conduits
- Lighting & Small Power
- Earthing & Lightning Protection
- Calibration of instruments
- Required Testing
- Commissioning Assistance







Wetback Contracts E & I are committed to delivering projects on time and within budget by employing the following strategies:

**EFFECTIVE PROJECT  
MANAGEMENT**

**ACCURATE COST ESTIMATION**

**QUALITY ASSURANCE AND  
CONTROL**

**EFFICIENT RESOURCE  
ALLOCATION**

**COMMUNICATION AND  
COLLABORATION WITH THE  
CUSTOMER AND OTHER  
STAKEHOLDERS**



## Contact Information

Business Name:	Wetback Contracts E&I (Pty) Ltd
Registration Number:	2023/581807/07
Physical Address:	No 1, Eastwood Office Park 11B Riley Road Bedfordview 2007
Office Contact:	+27 11 036 8000
Email:	<a href="mailto:info@wetback.co.za">info@wetback.co.za</a>
Website:	<a href="http://www.wetback.co.za">www.wetback.co.za</a>